

020 8864 5678
www.phillipsco.co.uk

1279 Greenford Road
Greenford, UB6 0HY

SHERWOOD AVENUE, GREENFORD, UB6 0PG **£499,950 Freehold**



WELL PRESENTED THREE BEDROOM END TERRACE HOUSE

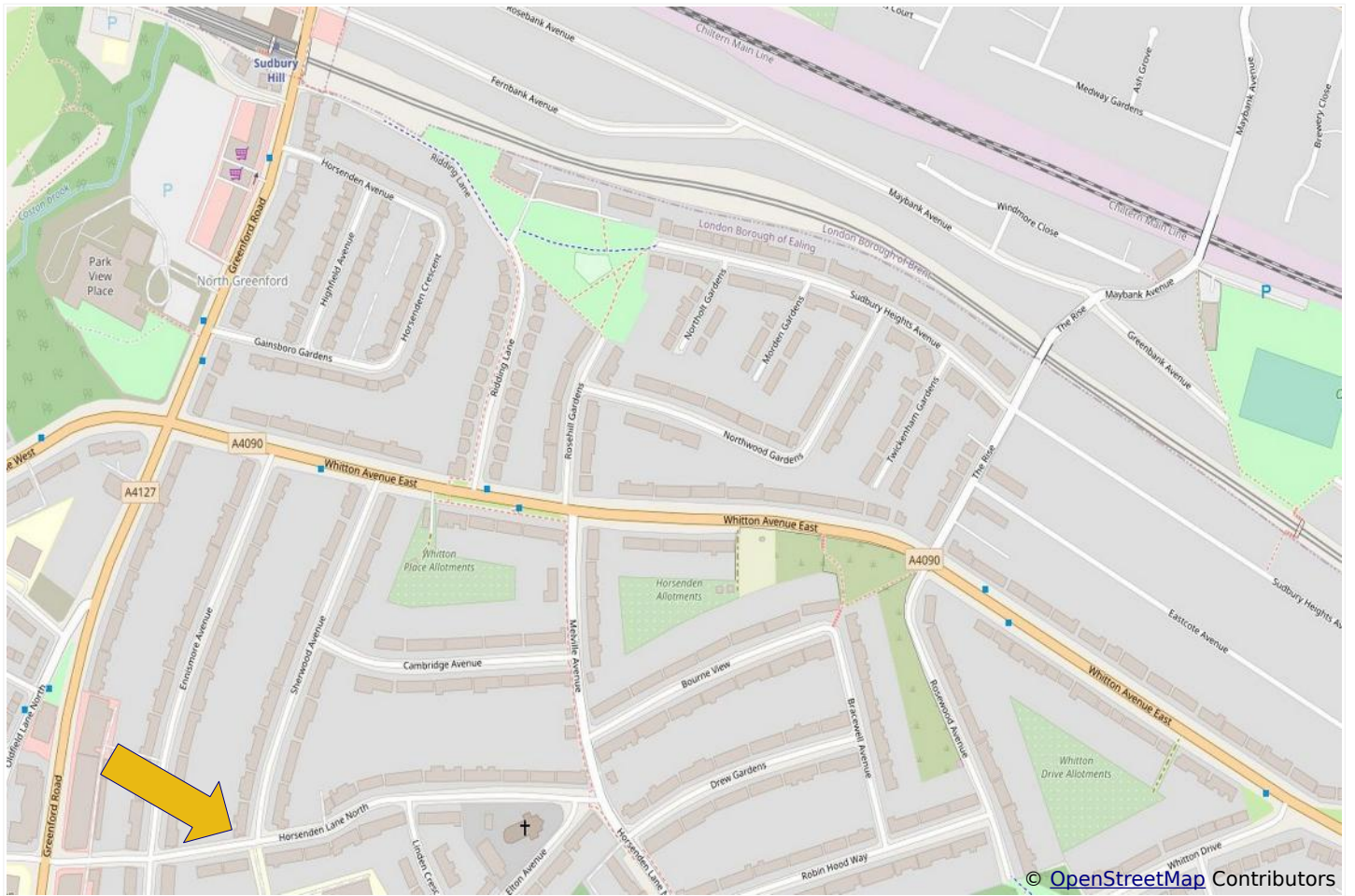
Constructed during the 1990s the property is located in an excellent residential position a few yards from Horsenden Primary School. Sudbury Hill Piccadilly Line and Greenford Central Line (zone 4) stations are within approximately ½ mile. H17, 487 & 92 bus routes are all within approximately ¼ mile together with local shopping and recreational facilities.

*** TWO RECEPTION ROOMS ***

*** GAS CENTRAL HEATING * DOUBLE GLAZING ***

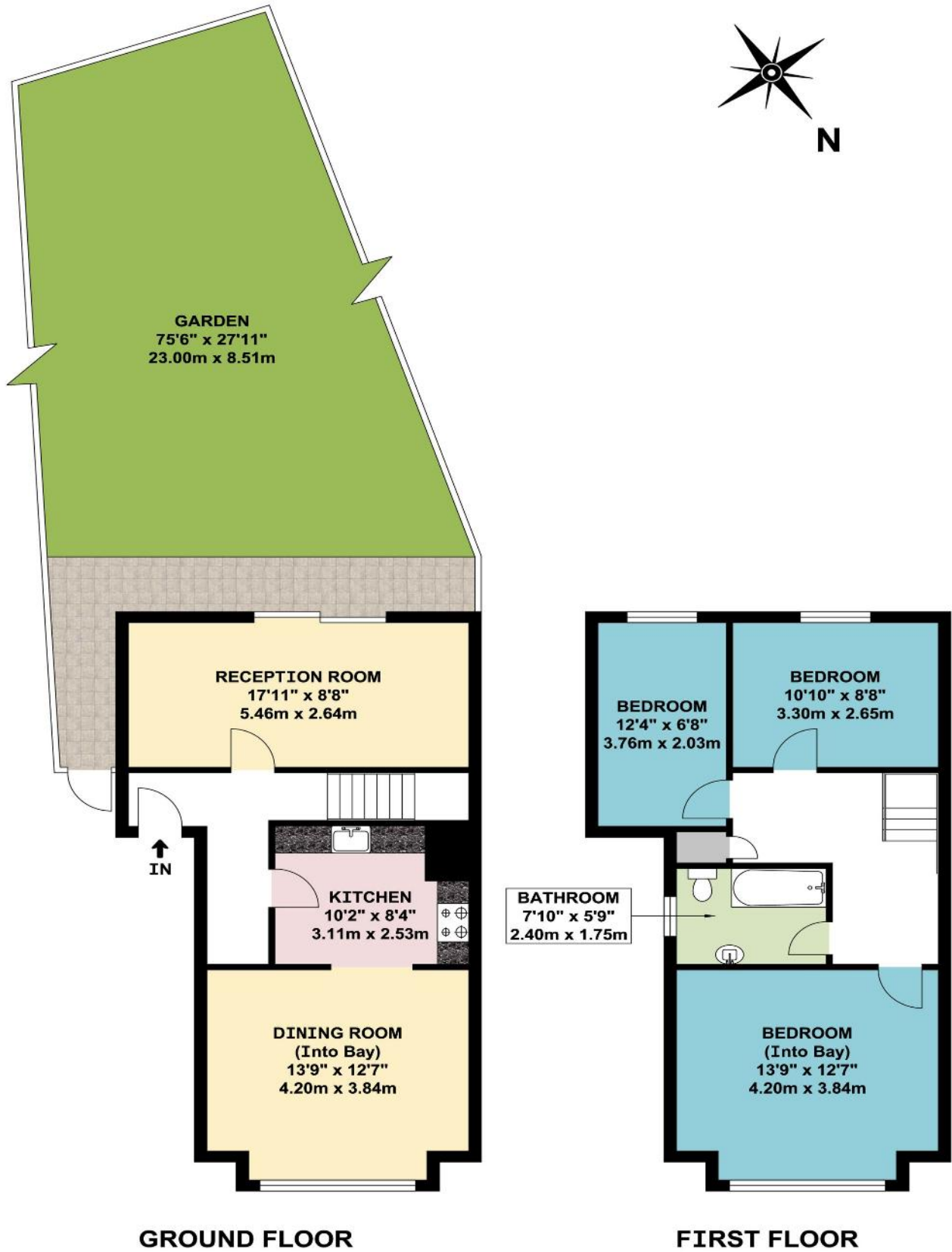
*** 75' REAR GARDEN * OFF STREET PARKING ***

*** NO UPPER CHAIN ***





Energy Efficiency Rating		Current	Potential
Very energy efficient - lower running costs			
(92-100)	A		
(81-91)	B		84
(69-80)	C	71	
(55-68)	D		
(39-54)	E		
(21-38)	F		
(1-20)	G		
Not energy efficient - higher running costs			
England, Scotland & Wales		EU Directive 2002/91/EC	



APPROX. GROSS INTERNAL FLOOR AREA 1005.99 SQ. FT / 93.46 SQ. M

These particulars are issued on the understanding that all negotiations are conducted through Phillips & Co. Whilst every care has been exercised in the preparation of particulars their accuracy is not guaranteed neither do they constitute an offer nor contract.

VIEWING by appointment via PHILLIPS & CO: 020 8864 5678

www.phillipsc.co.uk